


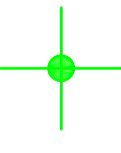

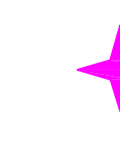

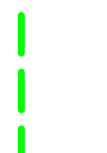

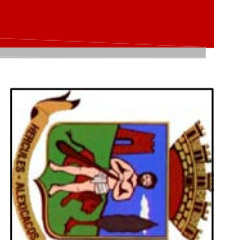
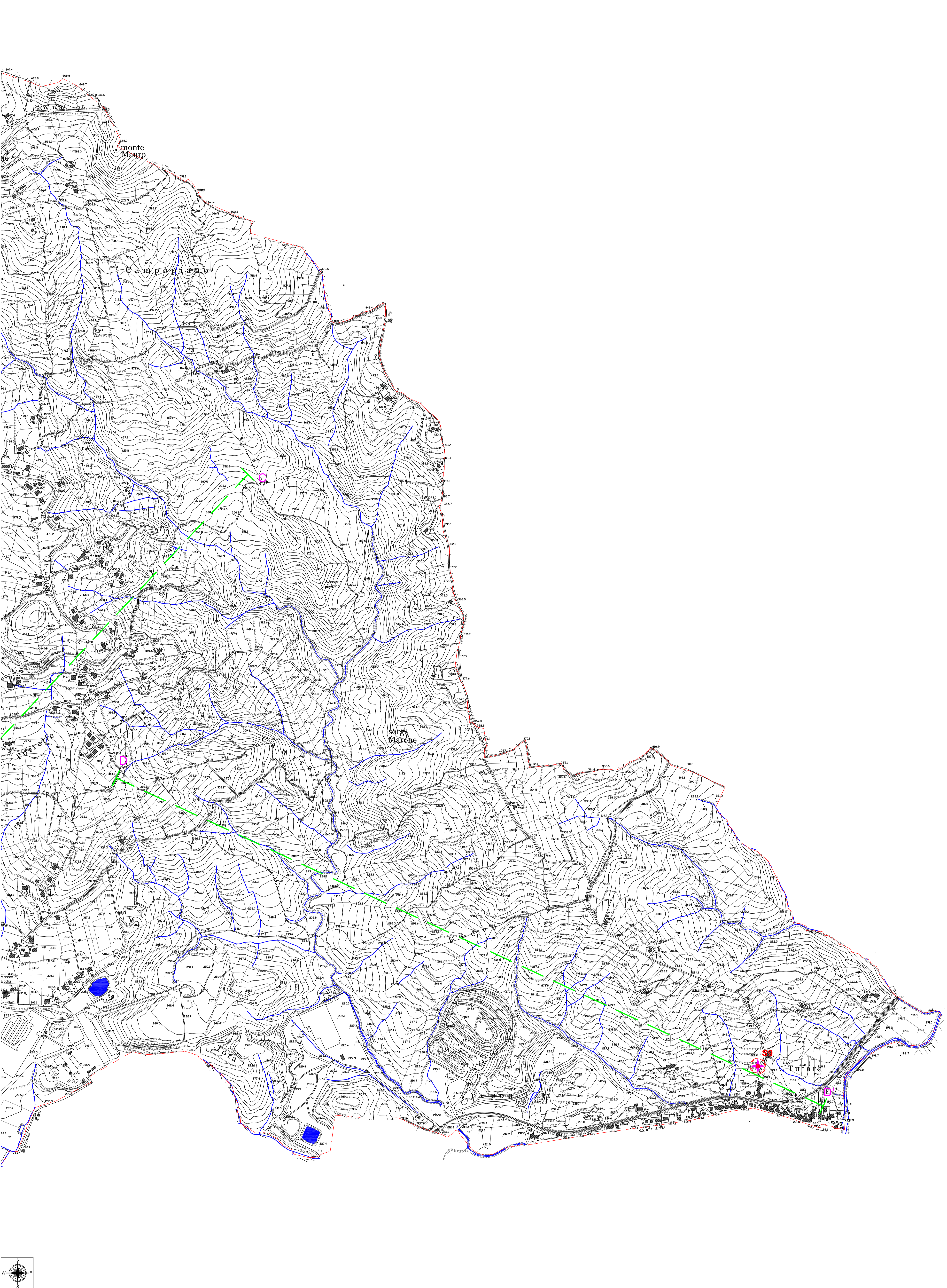


LEGENDA

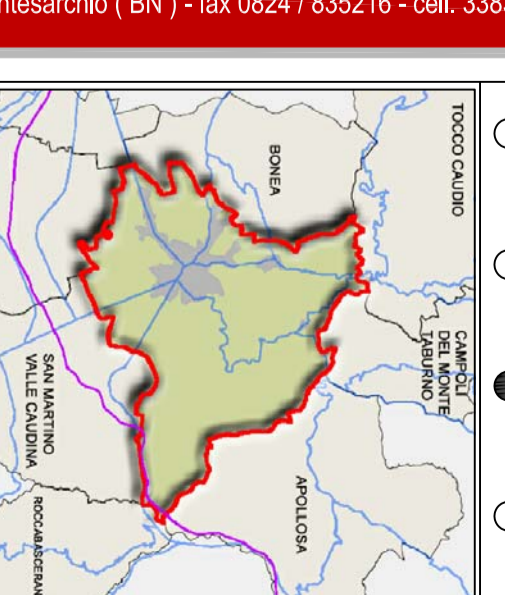
-  UBICAZIONE SONDAGGI GEONOSTICI (PUC 2017)
-  UBICAZIONE SONDAGGI GEONOSTICI (PUC 2007)
-  UBICAZIONE SONDAGGI GEONOSTICI EFFETTUATI PER LA REALIZZAZIONE DEL P.U.C.
-  UBICAZIONE SONDAGGI GEONOSTICI EFFETTUATI PER LA REALIZZAZIONE DEL P.U.C.
-  UBICAZIONE SONDAGGI GEONOSTICI EFFETTUATI PER LA REALIZZAZIONE DI OPERE STRUTTURALI
-  SONDAGGI CON PROVA SISMICA IN TORO (OPIM - J02/E)
-  PROSEZIONE SISMICA DI SUPERFICIE
-  PROVE PENETROMETRICHE DINAMICHE
-  TRACCIA DI SEZIONE GEOLOGICA



Città di
MONTESARCHIO (BN)

PUC

COMUNE
PIANO URBANISTICO COMUNALE
STUDIO GEO - SISMICO



CARTELLA UBICAZIONE INDAGINI

2024 - 11/11/2025
G1b 3